



Join BRI's Virtual Events Series in April and May as we get into the research with the experts and get back to the fundamentals with a new partner. Get better educated about how big business, big government interference and over-regulation affects how physicians practice medicine – and what you can do about it.

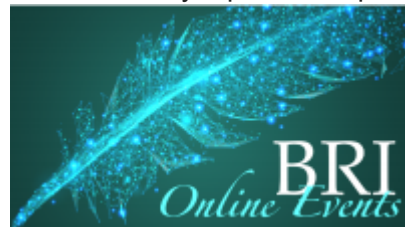
BRI's Virtual Events Series is free and open to all BRI Supporters. Seats are limited, so register early.

IN APRIL

Kofi Ampaabeng, Ph.D and Elise Amesz-Droz of the Mercatus Center join BRI **to talk about *caring for patients in a third-party payer system*** on Wednesday, April 21 at 1pm ET. Seats are limited so register for this free event [NOW](#).

Kofi Ampaabeng is a senior research fellow and data scientist at the Mercatus Center at George Mason University. He specializes in curating data and generating policy relevant insights from data. Prior to joining the Mercatus Center, he worked for IMPAQ International, LLC, where he evaluated the efficacy of government programs.

Kofi Ampaabeng received his PhD in Economics from Clark University, Massachusetts and his BA in Computer Science and Economics from the University of Ghana.



Elise Amesz-Droz is a Program Manager for the Open Health program at the Mercatus Center at George Mason University, where she manages the health policy portfolio. She is a Public Policy Fellow with The Fund for American Studies and a member of the Millennial Cohort of AEI's Leadership Network. Previously, she has worked as a Market Research Associate for a start-up company in the pharmaceutical industry. She is a graduate of the Fuqua School of Business at Duke University.

Wednesday, April 21, 1pm ET - Register [NOW](#).

IN MAY

Daniel Sem, Ph.D., MBA, JD, of Concordia University and RX Think Tank joins Benjamin

limited so register for this tree event [NOW](#).

Dr. Sem has over 25 years of experience in healthcare entrepreneurship and innovation, first in the biotechnology sector, then in academia. He has over 70 published papers and book chapters, 10 issued patents, and has co-founded several companies. In 2020 he published the book *Purple Solutions: A bipartisan roadmap to better healthcare in America* (purplesolutions.org). Dr. Sem works extensively with Universities, Industries and Government in Southeast Wisconsin to build shared healthcare innovation and commercialization resources for the region. He received his Ph.D. in Biochemistry from UW-Madison (1990), and then worked in biotechnology in San Diego where he co-founded Triad Therapeutics, ranked one of the top 10 biotech startups in the US by Drug Discovery Today (later acquired by Novartis for \$60 million). He also has Law and MBA degrees from Marquette, and has acquired a passion for healthcare policy – blending law, healthcare, ethics and sound economics.

Sem joined the faculty at Marquette in 2002 and served as Assistant then Associate Professor of Organic Chemistry, before joining Concordia University's new School of Pharmacy in 2011, transitioning to his current position as Dean of Business in July of 2016. He maintains an appointment in the Dept. of Pharmaceutical Sciences, and is also CEO of Bridge to Cures, and cofounder and Director of the *Remedium Exchange (Rx) Think Tank* (rxthinktank.org).

The mission of the Rx Think Tank is to provide information, resources and support to policy makers, healthcare innovators, patients and providers, to help them consumerize healthcare; and, to accomplish this by incentivizing, educating and empowering patients and providers so they can make their own healthcare decisions.

Wednesday, May 19, 1pm ET – Register [NOW](#).

THE MATCH

Benjamin Rush Institute is proud of our 4th year medical students that matched a few weeks ago and will be continuing their education as Residents. We look forward to following your journey – and starting BRI Resident Chapters with you!

If you haven't let us know yet where you Matched or your plans for next year, [email](#) or text Rebecca.

SUPPORT BRI

YOU can help support the future of healthcare by supporting Benjamin Rush Institute. Our mission is to educate medical students on free enterprise solutions that will help maintain the doctor-patient relationship. The new Administration threatens to add regulations to an already over-regulated healthcare industry, further limiting how doctors practice medicine. The future of medicine – our medical students – must be educated on how these practices will affect their future.

Consider supporting Benjamin Rush Institute. BRI is a 501(c)(3) organization. Your donation is tax-deductible.

Donate

*Copyright © *2020* *Benjamin Rush Institute*, All rights reserved.*

Our mailing address is:

Benjamin Rush Institute
P.O. Box 610-0001
DFW Airport, TX 75261-0001
214-507-4610

Want to change how you receive these emails?
You can update your preferences or unsubscribe from this list.